

SWINDON TOWN

FOOTBALL CLUB

official programme



1/-

First-hand

Lively

Reports

Complete

Comprehensive

Coverage

Close-up Action

Shots

Every Game

At home or away

The Evening Advertiser

has it covered

M^cILROYS

the Department Store
with that something extra *Service!*

Free

DELIVERIES
ESTIMATES ON CARPETS & CURTAINS
CARPET FITTING

WILLIAM McILROY (Swindon) LTD.

Tel. 5294



SWINDON TOWN FOOTBALL COMPANY LIMITED

Registered Office: COUNTY GROUND, SWINDON

President: Mr. W. J. CASTLE

Vice-President: Mr. J. DAVIES

Directors:

Chairman: Mr. H. E. LANE

Vice-Chairman: Mr. R. FRICKER

Messrs. F. L. COLLINGS, A. W. DONE, M. EARLE, C. J. GREEN, F. PLYER,
H. WILLIAMS, K. H. WILMER and Dr. J. NICHOLAS

General Manager: Mr. R. A. MORSE

Team Manager: Mr. F. FORD

SATURDAY, 10th JANUARY, 1970

Division II

SWINDON TOWN v Q.P.R.

Kick-off 3 p.m.

SWINDON TOWN	Q.P.R.	OFFICIALS
1 Downsborough	1 Kelly	REFEREE: Mr. G. W. Hill (Leicester)
2 Thomas	2 Clement	
3 Trollope	3 Gillard	
4 Butler	4 Venables	
5 Burrows	5 Watson	
6 Harland	6 Hazell	
7 Smith	7 Bridges	
8 Smart	8 Ferguson	
9 Horsfield	9 Clarke	
10 Noble	10 Marsh	LINESMEN:
11 Rogers	11 Francis	Red Flag: Mr. L. W. Fleet (Leamington Spa)
12	12 Hunt	Yellow Flag: Mr. L. A. Howells (Port Talbot)
Colours: Red and White	Colours: Blue and White	

G. A. Streetly

Tobacconist and Confectioner

10 BOURNE ROAD
MOREDON SWINDON
Telephone 4956

C. Goodenough and Sons

Removal and Storage Contractors
any distance

25 Cricklade Street Swindon
Telephone 4555 and 3855

CECIL GREEN

Artistic Decorations in all its branches

12 Armstrong Street
Swindon Wilts
Telephone 4593

W. J. SELWOOD

Telephone Swindon 5884

Saddlery

General Leather Goods Manufactured and
Repaired to Your Individual Requirements

103 BROAD STREET
SWINDON WILTSHIRE

Notton's Cafe

COUNTY ROAD

200 yards from Ground

Perfect meals at all times

For High Class
Central Heating, Plumbing
Painting and Decorating
Electrical Installations
and Repairs

**NORTH WILTS
Sanitary and Heating
Co. Ltd.**

NEWPORT STREET SWINDON
Telephone 5373/4



THE ALCOHOL FUEL

COATE GARAGE

REPAIRS - OVERHAULS - WELDING
SERVICING - REBORING - TYRES

Props. E. V. & W. H. Mattick
Marlborough Road Swindon

Leese, Ing & Co. Ltd.

Mineral Water and
Squash Manufacturers

LANSDOWN ROAD SWINDON

Telephone 22744

Maylott Studios

For Group and Sports Photographs

Official Photographer to
Swindon Town Football Club

31 Faringdon Road

Telephone 22792

Always at your service

L. Bibby

For all Types — Rags, Iron and Metal, etc.
Spot Cash Paid. Please Telephone 2101
and our van will call.

THE PADDOCK ERMIN STREET
STRATTON ST. MARGARET

news & views

It is with real pleasure we entertain today's visitors, our friends Queen's Park Rangers. We last played them at the County Ground on Tuesday, 2nd May, 1967, when they had already established themselves as the Champions of Division 3, and had also won the Football League Cup. It is appropriate that we now meet, the first Division 3 club to win the League Cup when we ourselves, also as a Division 3 team, won the League Cup.

Unfortunately both of us have been knocked out this season, and the Final will be contested by two Division 1 teams — namely, Manchester City and West Bromwich Albion. This season every club in the four divisions entered the competition, but many of us still remember the opposition when it first began. Many Division 1 clubs would not enter for many seasons. Fortunately the League Cup is now on a par with the F.A. Cup competition. The Final is played at Wembley before a full house, and entry to European football is assured by the winners provided (wrongly, in our opinion) they are members of Division 1.

Today's game is the 35th League encounter between the two teams at Swindon since the Third Division was formed in 1920. Of the 34 games played, Swindon has won 15, Rangers 9, with 10 drawn.

Biggest wins to date: Swindon on 18th December, 1926, by 6 goals to 2; and 12th January, 1963, by 5 goals to 0. Many of our supporters will remember the latter game, played on a snowy, hard pitch. Swindon played in canvas shoes and yellow gloves in addition to their normal red and white strip. It was one of the few games played on that day, and caused quite a lot of controversy. Queen's Park Rangers biggest win was on 11th October, 1930, by 4 goals to 1.

For the past twelve years Swindon has not been a very happy hunting ground for the Rangers. During that period they have only scored 6 goals, gained 3 points, and have not won here since 25th April, 1956. They have not scored more than one goal since 14th February, 1953, when they won 3—1.

The average gate for the last seven games is 10,000, yet the gate on 2nd May, 1967, was 21,210. This match was the last but one home game of the season. It was a splendid game with both teams in top form. Rogers scored in the 66th minute, and the Rangers equalised through Wilks, with almost the last kick of the game.

Swindon: Downsborough; Dawson, Trollope; Thomas, Nurse, Harland; Rogers, Penman, Terry, Smart, Jones (R.).

Queen's Park Rangers: Springett; Watson, Langley; Keen, Hunt, Hazell; Lazarus, Morgan (I.), Allen, Wilks, Morgan (R.).

Referee: Mr. D. H. Counsell.

This season on 20th September, 1969, we visited Loftus Road, and after 15 minutes were two goals in arrears, scored by Clarke in 13 minutes and Clarke (penalty) in 15 minutes. Swindon fought back, but were unable to score, although we came very close on several occasions in the second half.

Queen's Park Rangers: Spratley; Clement, Turpie; Sibley, Hunt, Hazell; Leach, Wilks, Clarke, Marsh, Morgan (I.).

Swindon: Downsborough; Thomas, Trollope; Butler, Burrows, Harland; Smith, Horsfield, Smart, Noble, Rogers.

THE GREAT WESTERN HOTEL

(OPPOSITE SWINDON RAILWAY STATION)

The business man's hotel with a top class
steak bar too!

Specialists in
LUNCHEONS and DINNERS
WEDDING PARTIES and RECEPTIONS
good food — quick service

J. ARKELL and SONS LIMITED Telephone SWINDON 22047

Mills and Merricks Limited

16-17 Bridge Street Swindon

Telephone 5365/6

"HOME OR AWAY"

**our function is to ensure that your home is
tastefully and economically furnished**

SWINDON'S COMPLETE HOUSE FURNISHERS

New City Office Supplies Limited

*Office and Stationery Suppliers
to Industry and Commerce*

6 Commercial Road Swindon
Telephone Swindon (STD Code 0793) 4605



CLARK BROS. (Swindon) LTD

Building and Civil Engineering Contractors

CONSULT US FOR
BUILDING AND CIVIL ENGINEERING
CONSTRUCTION IN ALL ITS PHASES

STRATTON ROAD

SWINDON

Telephone Swindon 27261

Supporters' Club Notes

The Cup-tie at Blackburn, let us hope, starts off the 1970's in a most satisfactory style. Fortunate, indeed, were those supporters who were able to avoid both the 'flu epidemic and the ties of work to make the journey to see the match. Those of us who were not so fortunate, no doubt, made every effort to get to a T.V. set capable of receiving Harlech T.V. and see the game last Sunday afternoon.

Today, supporters will find collection boxes all round the ground, carried by members of the Toc H Hospital Broadcasting organisation and helpers from the Supporters' Club. This most worthy collection provides the Toc H with the revenue to maintain, and extend, the broadcasts of a ball-by-ball commentary to all wards in the Swindon Hospitals. As extra wards are provided, so the Toc H has to find the money for telephone lines, headphones and so forth. Even important away matches are often covered — the later games and League Cup Final were notable examples of this service. Last season's collection amounted to £120 6s. 0d. — the second highest since the first collection in 1953/54 of £129.

Xmas and New Year greetings have been sent from one of our long-distance Supporters' Club and Supporters' Social Club members — Mr. and Mrs. J. Matthews, of 77 Arlington Avenue, Toronto 176, Canada, together with their membership renewal fees, and a donation for 1970/71 season. Mr. Matthews emigrated from Swindon in 1911 — he lived in Victoria Road in those days. On holiday, last year, he saw the Roma and Charlton Athletic matches before going back home. Though not normally expecting to come on another holiday this year, they intend coming if Swindon Town gets to Wembley this season. Well, our greetings to both of you in Canada, by way of a copy of this programme, and if Swindon Town reaches the F.A. Cup Final we will get you in even if we have to persuade Fred Ford to sign you both on as assistant trainers.

Coloured prints ordered by supporters who went to Rome on the Supporters' Club Charter flight should be able to collect them today — the printers promised them for yesterday. Anyone who has not yet ordered might like to see the prints, so call around to the Social Club after the match and ask for the Membership Secretary.

Agents for our Weekly Competition are still being enrolled. So contact Mr. Phil Hart, at Purton 601, or in our H.Q.'s before and after every first team match, for information and assistance.

Face in the crowd — is it you?



In all future editions of this Season's programme we shall publish a photograph of a small section of the crowd at a previous match, one member of which will be clearly indicated by means of a circle. This person will be entitled to a free seat at the next match on producing the programme at the office.

WE AIM TO PLEASE — TRY US

Tunleys

(1)

Glass (2)

Wallpaper (3)

Paint (4)

Polishes (5)

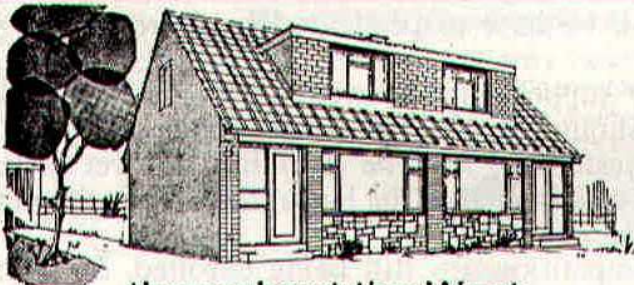
Artist Materials (6)

Prints (7) Ladders (8) Mirrors (9) Brushes (10) Aladdin Heaters (11)

MEMBERS OF THE



12/13 Gloucester Street Swindon Wiltshire



throughout the West

you will find Bradley Estates beautifully situated to meet the requirements of modern living. If you are thinking about a new home and would like to receive full details of our current and planned estates write now to 74 Victoria Road Swindon Wiltshire. Please send me details of

- Green Meadow Estate, Swindon, Wiltshire
- Nythe Estate, Swindon, Wiltshire
- Monkton Park Estate, Chippenham, Wiltshire
- Park Hill Estate, Frome, Somerset
- Damory Down Estate, Blandford Forum, Dorset
- Harkwood Farm Estate, Poole, Dorset
- Roman Way Estate, Bourton-on-the-Water, Gloucestershire

Name.....

Address.....



BRADLEYESTATES

our visitors



QUEEN'S PARK RANGERS

Pen Pictures Season 1969/70

MIKE KELLY (Goalkeeper)

Born London. Height 6ft. Mike, who made his initial half-dozen appearances during the Rangers' 1967/68 Second Division promotion season, really established himself as first-choice keeper with some brilliant displays last term. Tipped for a bright future.

ALAN SPRATLEY (Goalkeeper)

Born Maidenhead. Got his big chance in the senior side last season when Mike Kelly was injured. Proved a very fine stand-in and he will surely be challenging hard for a senior place this season.

RON SPRINGETT (Goalkeeper)

Born Fulham. Height 5ft. 10ins. Fulham turned Ron away in 1953 so he applied to Rangers for a trial, kicking off in the youth team as a centre-forward! But it was soon clear he was destined to become a great goalkeeper and it was in this position he made his debut for Rangers against Norwich in 1955. Sheffield Wednesday signed him in March 1958 and a little more than a year later he made his bow in the England team. Ron won 33 full caps and, with Wednesday, won a Second Division championship medal and played in the 1966 F.A. Cup Final. During the 1967 close season he returned to Rangers in a unique family transfer deal which took his brother Peter to Hillsborough.

DAVE CLEMENT (Full-back)

Born Battersea. During his early days at the Bush, Dave created something of a record by playing two matches in one day — both against Watford. He turned out for the third team during the morning, then the Reserves after lunch. He was chosen to travel with the England Youth Squad for the 1966 UEFA Youth Tournament in Yugoslavia. Made his League debut during Rangers' Third Division championship campaign of 1966/67 and has for the past couple of seasons been a fairly regular member of the senior team.

BOBBY FINCH (Full-back)

Born London. Bobby developed in Rangers' junior sides and is itching to get a regular game in the League side. Until now he has only had half-a-dozen chances to show his paces in the senior side.

ALLAN HARRIS

Born Northampton. Height 5ft. 8ins. Joined Chelsea in 1960 gaining a place in their First Division side two years later. He spent just over a year with Coventry before returning to Stamford Bridge. He played with his brother Ron in Chelsea's F.A. Cup Final team, beaten by Spurs, a few weeks before signing for Rangers.

IAN WATSON (Full-back)

Born London. Height 5ft. 11ins. Started his professional career with Chelsea but was unable to make a big impression at Stamford Bridge. He made his League debut in 1962/63 and was transferred to Rangers in 1965. After his first season at the Bush, though, he lost his place and it was only last season, when he maintained an ever-present record, that he regained favour.

TONY HAZELL (Half-back)

Born High Wycombe. Height 5ft. 10ins. Joined Rangers shortly after leaving school and made his way through the junior ranks to the League side in 1964/65. Another member of the League Cup winning team. Won five England Youth caps.

RON HUNT (Half-back)

Born London. Height 5ft. 10½ins. First sought soccer fame with West Ham where he was a ground staff boy. He then joined Reading, but again failed to fulfil his ambition to become a League player. Now he has proved a wonderful servant to Rangers, since making his League debut in 1964/65. A member of our League Cup winning side.

FRANK SIBLEY (Half-back)

Born London. Height 5ft. 10ins. Frank was a budding centre-forward at school — good enough to get a trial for the England team. Then, at 14 he contracted rheumatic fever and doctors told him he would never again play soccer. But he fought against this decision and when he was 15 years and 274 days old he found himself in Rangers' first team for a League Cup-tie at Aldershot. He made four appearances for the England Youth XI, played in our 1967 Wembley team and last season completed his century of League appearances.

DON ROGERS SPORTS
29 FARINGDON ROAD SWINDON

Telephone 27378

Main suppliers to Swindon Town Football Club

Stockists of

All leading makes of Football Boots and Clothing
Table Tennis, Badminton, Rugby and Hockey equipment

IN FACT THE COMPLETE SPORTS OUTFITTER

RIMES of SWINDON

POPULAR EXCURSION TO

			Fare	
			adult	child
Sat., 17th JANUARY	LEICESTER CITY	Dept. 9.30 a.m.	16/6	11/-
	SERVICE DIRECT TO THE GROUND			
	ALL SEATS NUMBERED AND RESERVED			

Book now at

102 Commercial Rd., Swindon **46 Cricklade St., Cirencester**
Telephone 27113 Telephone 3479

or with any of Rimes Booking Agents

Dobell Shearman & Co. Ltd.

HIGH STREET SWINDON

Telephone 4961

FANCY and COMMERCIAL STATIONERS
TYPEWRITERS and OFFICE EQUIPMENT

Greetings Cards for all Occasions
from Leading Art Publishers



W. J. CASTLE

Office and Bakery

4 and 5 MARKET STREET
SWINDON

Telephone 22017

Specialists—

BIRTHDAY CAKES - WEDDING CAKES
DAIRY CREAM - PASTRIES
BUNS - ROLLS - SPONGES



OUR VISITORS (continued)

LES ALLEN (Forward)

Born London. Height 5ft. 9ins. Les is Rangers' Manager, but still registered as a player. He signed for Chelsea in 1954 and moved to Spurs in 1959. He was an ever-present member of the Spurs' famous Cup and League double side of 1960/61 and was chosen for the England Under-23 side v. Wales. Later he was picked for the Football League v. the Italian League. Rangers signed him in 1965 and, in his first season, topped the Third Division scoring list with 30 goals. Won a League Cup Winners' medal in 1967 and was last season appointed Rangers' Player-Manager.

BARRY BRIDGES (Forward)

Born Norwich. Height 5ft. 10ins. Rangers paid what was then a Club record £55,000 fee to Birmingham City for Barry at the beginning of last season. He first broke into the big time with Chelsea in 1958/59 and it was during his stay at Stamford Bridge that he won his four England caps. Birmingham paid £55,000 for his transfer in 1966 and in his last full season at St. Andrews (1967/68) he was the Blues' top league scorer with 23 goals.

CLIVE CLARK (Forward)

Born Leeds. Height 5ft. 7ins. Clive signed for Rangers for the second time during the close season, returning to his former club as part of the deal which took young Alan Glover to West Bromwich. Clive was a groundstaff lad with Leeds United but signed professional with Rangers during the summer of 1958. He went almost immediately into the first team and was soon attracting the big clubs with some brilliant displays on the left wing. Pushed for a transfer because Third Division defenders were "clogging" him and West Bromwich paid £17,500 for him in March 1961. With Albion he won an England Under-23 cap and, when they were beaten by Rangers in the 1967 League Cup Final, Clive established a record which has yet to be equalled — by scoring in every League Cup match, including the Final. While on Albion's East African tour in 1968, he injured his knee and missed a substantial part of last season as a result.

FRANK CLARKE (Forward)

Born Wolverhampton. Height 5ft. 11½ins. Frank signed professional forms for Shrewsbury in 1961 and within two years established himself as a hard hitting striker in their Third Division side. He signed for Rangers during the 1967/68 campaign.

IAN GILLARD (Forward)

Ian joined Rangers from the Pathfinders Club of Slough and has already gained much respect for his displays in the Reserves. He made his League bow last season.

MIKE LEACH (Forward)

Born London. Height 6ft. Capped twice for the England Youth XI in 1962/63, really established himself as a regular first teamer last term. As the Club struggled to survive in the First Division, Mike hit 8 goals to make him level top scorer in League games.

MICK McGOVERN

Born Hayes. Signed for Rangers in face of strong representations from other clubs. As yet, he has not had the opportunity to make his mark in the senior team though his couple of first team outings to date have shown that he is a lad of the highest promise.

RODNEY MARSH

Born London. Height 6ft. Rodney made his League debut for Fulham against Aston Villa in March 1963 but soon encountered the first of many serious injury set-backs. Rangers signed him in 1966 and in his first full season he became the country's leading scorer with 44 goals.

TERRY VENABLES

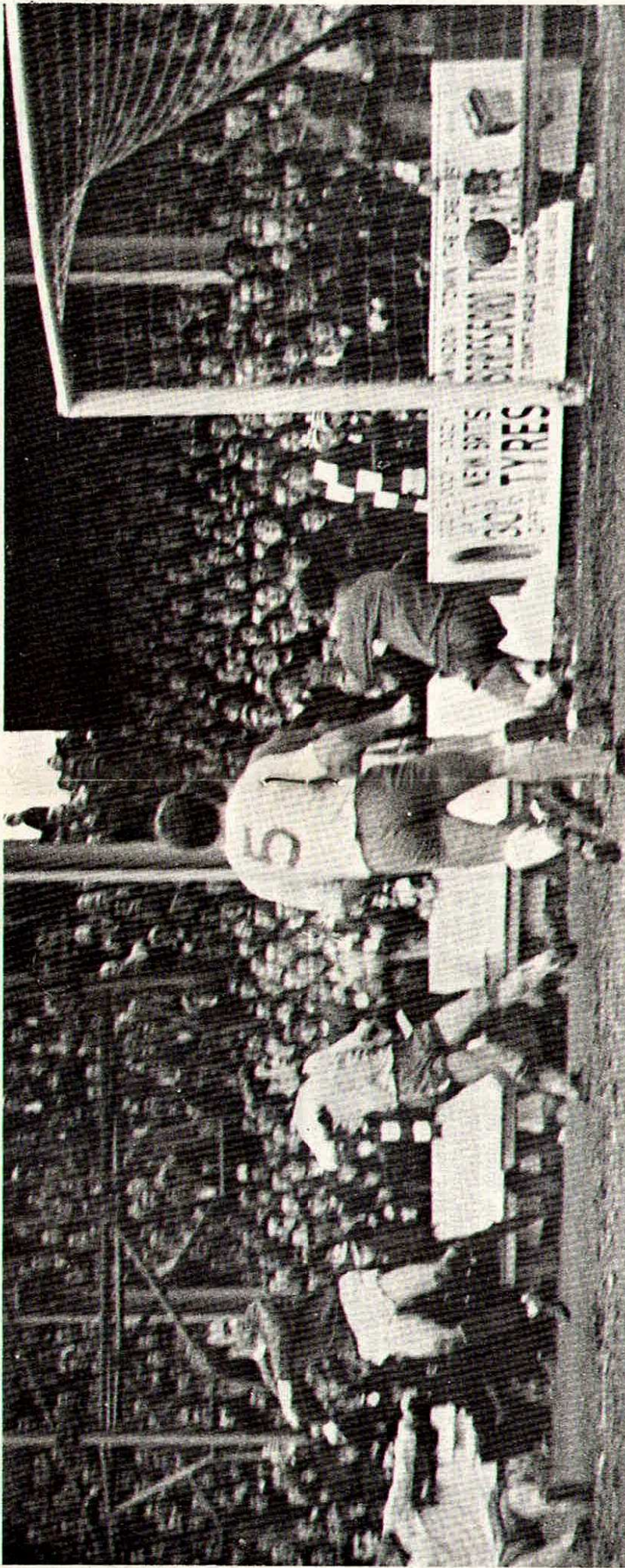
Born Dagenham. Transferred to Rangers from Spurs during the close season. Played for England at schoolboy, youth, amateur, Under-23 and full international levels. Won 2 full caps. Once had chance of becoming a professional singer but continued in soccer.

ALAN WILKS

Born London. Joined Rangers from Chelsea. Had League baptism in 1966/67 following season equalled individual scoring record in League Cup when he crashed home 5 goals against Oxford.

STEVE TOM

Age 18. A former West Ham groundstaff lad who has yet to get his chance in League soccer. Has shown considerable promise in Rangers' junior sides.



Swindon's goal against Aston Villa came from Peter Noble who outjumped the defence to head home a glorious Don Heath centre.

Photo by R. Marsh

League Table - Division I I

(up to and including Wednesday, 7th January, 1970)

	P	W	D	L	F	A	P
Huddersfield Town	25	14	6	5	43	26	34
Sheffield United	27	14	5	8	52	22	33
Blackburn Rovers	26	14	5	7	37	27	33
Cardiff City	25	13	6	6	41	25	32
Queen's Park Rangers	26	13	5	8	47	35	31
Leicester City	27	11	9	7	42	36	31
Carlisle United	27	11	7	9	40	35	29
Swindon Town	26	9	11	6	33	29	29
Blackpool	25	11	7	7	33	32	29
Middlesbrough	24	11	5	8	29	28	27
Bristol City	25	9	7	9	31	26	25
Birmingham City	26	8	7	11	33	43	23
Charlton Athletic	26	5	13	8	24	40	23
Bolton Wanderers	26	8	6	12	38	42	22
Oxford United	24	7	8	9	20	25	22
Norwich City	25	9	4	12	22	31	22
Portsmouth	26	7	7	12	35	48	21
Millwall	25	6	9	10	28	40	21
Hull City	25	8	4	13	36	44	20
Watford	26	6	7	13	30	34	19
Preston North End	25	6	7	12	26	35	19
Aston Villa	25	4	9	12	19	36	17

Forthcoming Matches on This Ground

TUESDAY, 20th JANUARY, 1970

Football Combination Cup

SWINDON TOWN v. CARDIFF CITY

Kick-off 7.30 p.m.

SATURDAY, 24th JANUARY, 1970

F.A. Cup — Fourth Round

SWINDON TOWN v. CHESTER

Kick-off 3 p.m.

SATURDAY, 31st JANUARY, 1970

Division II

SWINDON TOWN v. BOLTON WANDERERS

Kick-off 3 p.m.

Previous Matches

DIVISION II

FRIDAY, 26th DECEMBER, 1969

Drew with Aston Villa (home) 1—1.

Team: Downsborough; Thomas, Trollope; Butler, Burrows, Harland; Heath, Smart, Horsfield, Noble, Rogers.

Scorer: Noble.

Attendance: 22,984.

Referee: Mr. L. Callaghan (Merthyr Tydfil).

SATURDAY, 27th DECEMBER, 1969

Drew with Charlton Athletic (away) 1—1.

Team: Downsborough; Thomas, Trollope; Butler, Burrows, Harland; Smith, Smart, Horsfield, Noble, Rogers.

Scorer: Smith.

Attendance:

Referee: Mr. D. Turner (Staffs).

F.A. CUP — THIRD ROUND

SATURDAY 3rd JANUARY, 1970

Beat Blackburn Rovers (away) 4—0.

Team: Downsborough; Thomas, Trollope; Butler, Burrows, Harland; Smith, Smart, Horsfield, Noble, Rogers.

Scorers: Smith, Horsfield, Rogers, Butler.

Attendance:

Referee: Mr. J. Hunting (Leicester).

FOOTBALL COMBINATION CUP

SATURDAY, 27th DECEMBER, 1969

Lost to Swansea Town (home) 2—0.

Team: Allen K. R.; Allen K., Fry; Handrick, Blick, Desmeules; Hubbard, Dangerfield, Jones, Bailey, Claypole.

Attendance: 614.

Referee: Mr. D. W. Civil (Birmingham).

F.A. Challenge Cup — Fourth Round

SWINDON TOWN v. CHESTER

Saturday, 24th January, 1970

SEASON TICKET HOLDERS holding 'A' issue tickets are advised that their tickets for the above-mentioned match are now available and must be claimed by Saturday next, 17th January, 1970.

The man in the middle

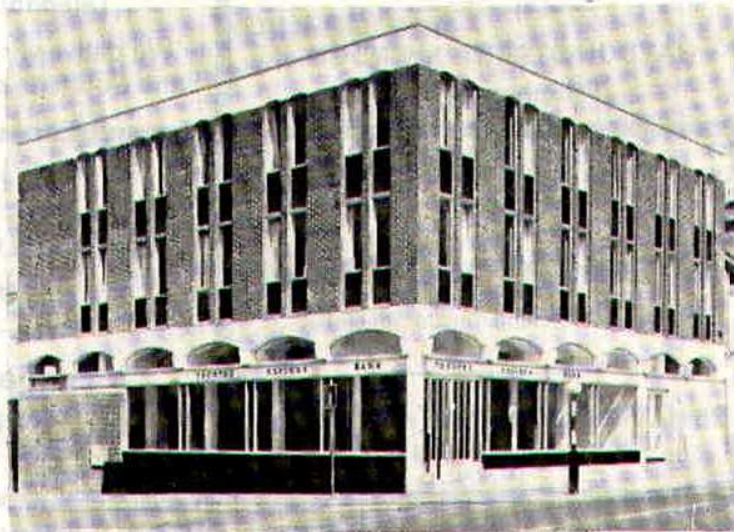


GORDON HILL

Headmaster of Stafford Leys County Primary School. Married, with two sons, Matthew, age 7, and Martin, age 5. Began refereeing in 1952 — as his pupils said he did not know the rules. Progressed through North Regional and Central Leagues to the Football League linesmen's list 1960 and the Football League referees' list 1966. Qualified F.A. Coach.

T RUSTEE
S AVINGS
B ANK

93 Commercial Road
Swindon



Facilities include

- CURRENT ACCOUNT SERVICE
- 24 HOUR CASH DISPENSER
- T.S.B. UNIT TRUST
- CONTRACTUAL SAVINGS SCHEME (giving substantial Tax benefits)

**INTEREST 7% IN THE
SPECIAL INVESTMENT DEPT.**

Hatton's Newsagency

A. J. D. & N. J. Woodhouse

Newsagents :: Tobacconists
Confectioners

Agents for Wessex School of Motoring
Booking Agents for Rimes Coaches

6 REGENT CIRCUS (near G.P.O.)
Telephone Swindon 22731

BRETTS

PET and GARDEN SUPPLIES

32-33 Commercial Road
and
6 Cromwell Street Swindon

THE PORK SHOP

(Swindon Bacon Curing Co. Ltd.)

Specialists in

Bacon - Pork - Cooked Ham

50 FLEET STREET SWINDON
Telephone 22122

J. WILMER

Coal Merchants

St. Margaret's Road Swindon

Telephone 22535

SOUTHERN LAUNDRY CO. LTD.

Launderers and Dry Cleaners

HAYDON STREET SWINDON
Telephone 4161

At Your Service

A. E. LUDLOW LIMITED

Wholesale Fruit and Potato Merchant

COLBOURNE STREET
SWINDON WILTSHIRE
Telephone Swindon 3583

We deliver Fresh Fruit, Vegetables
and Potatoes daily—**Wholesale Only**

FOR ALL YOUR ANGLING NEEDS
CONSULT

Frank Woodward

Swindon's Fishing Tackle Specialist

25 HAVELOCK STREET SWINDON
Telephone 3879

For Paints of Good Quality

H. S. Hodges & Sons

(SWINDON) LTD.

Cricklade Road Swindon
Telephone 22422
Dulux, Brolac, Valspar, Wallicharm, etc.

24 hour Delivery
Service

YOUR COMPLETE JANITORIAL SERVICE

Wilts Cleaning Supply Service

Kembrey Warehouse Rear 255 Cricklade Road
SWINDON

Telephone 21012

Represented by G. ALEXANDER
Telephone Swindon 27833

Division I I

Fixture List

1969

August

9 Blackburn Rovers	(A) 0—2
13 Cardiff City	(A) 2—2
16 Carlisle United	(H) 2—2
19 Cardiff City	(H) 2—1
23 Aston Villa	(A) 2—0
30 Charlton Athletic	(H) 5—0

September

2 League Cup (2) Swansea	(A) 3—1
6 Blackpool	(A) 2—3
13 Oxford United	(H) 0—0
16 Middlesbrough	(A) 0—0
20 Queen's Park Rangers	(A) 0—2
24 League Cup (3) Oxford	(A) 0—1
27 Leicester City	(H) 1—1
30 Millwall	(H) 2—1

October

4 Bolton Wanderers	(A) 1—0
7 Carlisle United	(A) 2—2
11 Sheffield United	(H) 2—1
18 Hull City	(H) 1—0
25 Portsmouth	(A) 1—3

November

1 Norwich City	(H) 2—0
8 Birmingham City	(A) 0—2
15 Watford	(A) 0—0
22 Huddersfield Town	(H) 2—1
29 Preston North End	(A) 1—3

December

6 Bristol City	(H) 1—1
13 Oxford United	(A) 0—0
20 Blackpool	(H) P
26 Aston Villa	(H) 1—1
27 Charlton Athletic	(A) 1—1

1970

January

3 F.A. Cup Blackburn	4—0
10 Queen's Park Rangers	(H)
17 Leicester City	(A)
24 F.A. Cup (4)	
31 Bolton Wanderers	(H)

February

7 Sheffield United	(A)
14 Blackburn Rovers	(H)
21 Portsmouth	(H)
28 Hull City	(A)

March

7 Huddersfield Town	(A)
14 Preston North End	(H)
21 Bristol City	(A)
28 Watford	(H)
30 Norwich City	(A)
31 Birmingham City	(H)

April

4 Millwall	(A)
14 Middlesbrough	(H)

Appearances

Name	Div. II	League Cup	F.A. Cup	Cup Winners Cup
Downsborough	26	2	1	2
Thomas	26	2	1	2
Trollope	26	2	1	2
Butler	26	2	1	2
Burrows	25	2	1	1
Harland	26	2	1	2
Smith	12 (1)	2	1	2
Horsfield	25	2	1	2
Smart	26	2	1	2
Noble	23	2	1	2
Rogers	20	2	1	2
Jones	8 (5)			(1)
Blick	1 (4)			1
Heath	15			
Down	(1)			
Penman	1	(1)		

(Playing as substitute in brackets)

Goalscorers

Name	Div. II	League Cup	F.A. Cup	Cup Winners Cup
Horsfield	9		1	3
Noble	9	3		1
Jones	4			1
Rogers	3		1	
Smith	2		1	
Burrows	1			
Trollope	1			
Thomas	1			
Smart	2			
Butler			1	
Opponents	1			

HARRY LUNN

(Ex NOTTS COUNTY, PORTSMOUTH and SWINDON TOWN F.C.)

Fish Bar and Restaurant
27-28 COMMERCIAL ROAD SWINDON

RESTAURANT open 9 a.m. to 10 p.m. for

Snacks - Lunches - High Teas - Evening Meal

FISH BAR open Mid-day and Evenings until 11 p.m.

HULFORD MOTORS LIMITED

SELF DRIVE HIRE

Fleet of 1969/8 Fords Escorts De-Luxe
Cortinas De-Luxe Cortinas 1600 Estate
(Bench Seat Column Change) — Zephyr V4s

SHRIVENHAM ROAD

(200 yards from Football Ground)

Telephone 4934

Large Car Park Available

COWLEY BROS. (Wroughton) LTD.

BUILDERS OF MODERN ATTRACTIVE
HOUSES and BUNGALOWS

Developments at
SWINDON WROUGHTON BADBURY

Office

28 NEWPORT STREET
SWINDON

Telephone Swindon 6870

Reserved for British Rail



Inter-City

Key of the Board

First Section

A—Burnley v. Wolverhampton W.
 B—Chelsea v. Leeds United
 C—Everton v. Ipswich Town
 D—Manchester United v. Arsenal
 E—Newcastle United v. Southampton
 F—Nottingham Forest v. Sunderland
 G—Sheffield Wed. v. West Ham United
 H—Tottenham Hotspur v. Derby County
 I—Albion v. Crystal Palace
 J—Birmingham City v. Charlton Ath.
 K—Cardiff City v. Sheffield United
 L—Huddersfield Town v. Leicester City
 M—Hull City v. Aston Villa
 N—Middlesbrough v. Oxford United
 O—Millwall v. Blackburn Rovers
 P—Norwich City v. Bristol City
 Q—Portsmouth v. Bolton Wanderers
 R—Preston North End v. Carlisle Utd.
 S—Watford v. Blackpool
 T—Bournemouth & B.A. v. Reading

Second Section

A—Bradford City v. Rochdale
 B—Bristol Rovers v. Mansfield Town
 C—Doncaster Rovers v. Halifax Town
 D—Gillingham v. Rotherham United
 E—Orient v. Barnsley
 F—Plymouth Argyle v. Fulham
 G—Stockport County v. Southport
 H—Walsall v. Torquay United
 I—Aldershot v. Scunthorpe United
 J—Colchester United v. Hartlepool
 K—Exeter City v. Notts County
 L—Grimsby Town v. Port Vale
 M—Northampton Town v. Swansea Town
 N—Peterborough United v. Darlington
 O—Southend United v. Newport County
 P—York City v. Workington



Going by Car?

LEICESTER CITY

Saturday, 17th January, 1970

SWINDON to LEICESTER . . .

Take the A361 road from Swindon via Highworth, Lechlade and Burford to **Chipping Norton**.

31½ miles

Keep to the A361 from Chipping Norton (the Banbury Road) at 1 mile turn left and ahead then turn right for Bloxham and **Banbury**.

44 miles

In Banbury at junction take A41 past the Cross and leave by the A423 (Southam Road) then via Mollington and Ladbroke to **Southam**.

58½ miles

At junction take B4100 and join the A426 to Dunchurch and **Rugby**.

69 miles

Continue on A426 by Rugby School, turn left into Warwick Street, turn right into Corporation Street and at end keep left to Newbold Road. After crossing Mill Bridge turn right. Keep to the A426 via Lutterworth and **Blaby**.

85½ miles

The A426 leads into Aylestone Road, on into Welford Road, **Leicester**.

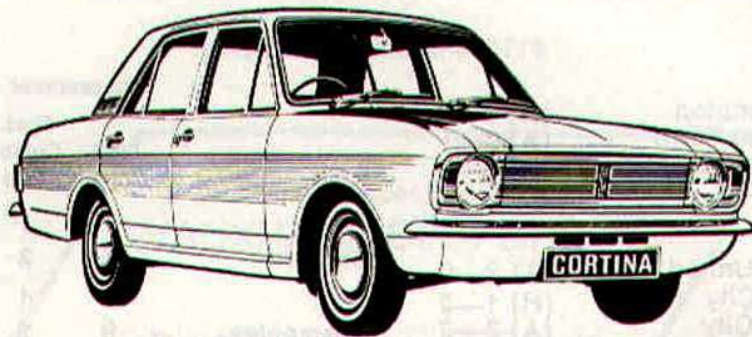
90 miles



Route kindly supplied by R.A.C.



Suppliers to the Swindon Team
MAY WE SUPPLY YOU?



EARLE

of Chippenham Limited

MAIN

FORD

DEALERS

COCKLEBURY ROAD CHIPPENHAM
Telephone 3255

H. HIBBERD LIMITED

FOR YOUR EARTH-MOVING EQUIPMENT

Plant Hire Contractors



40 NEWPORT STREET SWINDON
Telephone Swindon 6125

Football Combination

Fixture List

1969

August

9	Southampton	(H)	2—2
16	Swansea Town	(A)	0—1
23	Queen's Park Rangers	(H)	1—4

September

4	Oxford United	(A)	2—0
6	Bristol City	(H)	1—2
17	Cardiff City	(A)	3—2
20	Arsenal	(H)	1—2
27	Luton Town	(A)	0—2

October

4	Reading	(H)	1—2
7	Bristol Rovers	(A)	P
11	Ipswich Town	(A)	1—0
21	Bristol City	(A)	2—7
25	Crystal Palace	(H)	1—0

November

8	Plymouth Argyle	(H)	3—1
15	Crystal Palace	(H)	1—2
22	Swansea Town	(A)	1—1
29	Tottenham Hotspur	(H)	1—4

December

8	Peterborough United	(A)	0—2
13	Leicester City	(H)	0—2
17	Plymouth Argyle	(A)	1—1
20	West Ham United	(A)	3—1
27	Swansea Town	(H)	0—2

1970

January

17	Gillingham	(A)
20	Cardiff City	(H)
24	Chelsea	(H)
27	Arsenal	(A)

February

3	Arsenal	(H)
7	Fulham	(H)
10	Bristol Rovers	(H)
17	Walsall	(A)
24	Northampton	(A)

March

7	Birmingham City	(H)
11	Crystal Palace	(A)
18	Norwich City	(A)
21	Bristol Rovers	(A)

April

4	Bournemouth & B.A.	(H)
---	--------------------	-----	-------

Name	Appearances		Goalscorers	
	Foot. Comb.	Foot. Cup	Foot. Comb.	Foot. Cup
Price	1			
Dawson	7	3		
Fry	14	4		
Desmeules	9	2		
Blick	16	5		
Handrick	16	5	1	
Heath	4			
Penman	11	1	1	
Down	13	3	6	
Dangerfield	14 (1)	4	10	1
Moss	4	1		1
Bailey	11 (2)	5	1	
Grzadowski	2			
Hubbard	15	5		
Jones (R)	11	3		
Allen (K)	8	3		
Jones (C)	4	2		
Wetson	1	1		1
Claypole	10	2		
Porter	2	2	1	1
Allen K. R.	2	2		
Smith		1		1
Boyd		1		

(Playing as substitute in brackets)

AKERS GARAGE LIMITED

THE STREET MOREDON SWINDON WILTSHIRE

Telephone Swindon 3457/8

main dealer for
VAUXHALL/BEDFORD
and
Parts and Accessories
Sales and Service

Showrooms open
MONDAY to FRIDAY — 8 a.m. to 8 p.m.

SATURDAY — Closed 7 p.m.

SUNDAYS — 10 a.m. to 2 p.m. for Petrol and Viewing



MODERN LIVING IN EXPERIENCED HANDS

Wilson homes are the result of over 60 years experience in house building. The Company Architect and his design team are always researching into the ever changing requirements of home buyers, to give them better designed homes, which are easy to run, easy to maintain and comfortable to live in.



All our houses and bungalows are built to the stringent specification of the National House Builders Registration Council who will guarantee your home for 10 years.

Visit a Wilson Show Home and you will see for yourself why Wilson's have such a reputation in giving value for money.

WILSON

(Swindon) LTD., 90-92 Commercial Road, Swindon Telephone 6361 (3 lines)

seating manufacturers for Stadium Seats Ltd

- * Heavy, medium and light steel fabrication
- * Custom made production line equipment
- * Ancillary work for industry and the building trade

FAST EFFICIENT SERVICE BY



MARTYN LYN SHAW LTD

BOUNDARY WORKS - STRATTON ROAD - SWINDON - WILTS

Telephone 21844

spectator seating in high density polyethylene

- * Supplied to over 36 Football League clubs
- * Any colour. No maintenance
- * Industrial seats for the food, electronics and pharmaceutical industries
- * Largest supplier of spectator and industrial seating in Europe

STADIUM SEATS LTD

STRATTON ROAD - SWINDON - WILTS Telephone 21844